




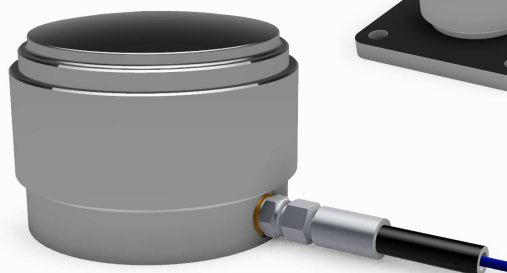
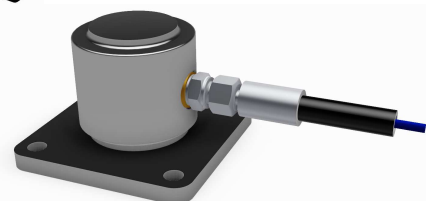
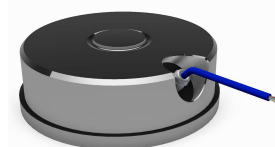
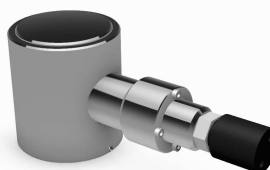
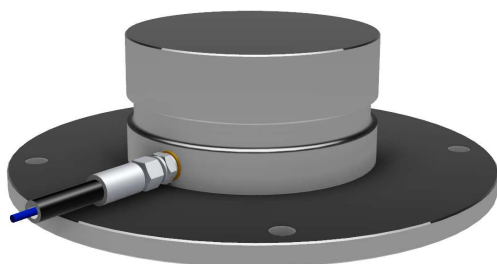


OEM Compression Load Cell LS-3010-CL Series

Robust designs manufactured specifically for use in harsh and challenging environments offshore, such as platforms, ships, rigs and drilling applications.

-  **Redundant signal with dual electronics**
-  **Range up to 1200 metric tons**
-  **Submersible upon request**
-  **Ex ia IIC T5 and IEC Ex approved**
-  **Stainless Steel**







The LS-3010-CL is a well proven 4-20mA output compression load cell with fast response time, high accuracy and long life time performance in harsh and hazardous environments.

Huge flexibility in design and a long record of field proven solutions has made these sensors popular among customers in the gas and oil industry.

The sensor is digitally calibrated with an analogue 4-20mA output signal in a two conductor configuration.

The electronics are molded and encapsulated inside the sensor, proven to be the best solution for EMC, potential leakage and long lifetime performance.

Typical Applications are:

-  Offshore Drilling
-  Offshore Production
-  Weighing systems
-  Winches

Technical information

| | |
|---|--|
| Full scale load | 0 – 1T... 1200T |
| Maximum load at 20°C (Test Load) | 0T – 25T Full scale range x 2 25T – 180T Full scale range x 2 to x 1.33 180T – 1200T Full scale range x 1.33 |
| Temperature Range | -20°C to 80°C |
| Linearity | ± 0.2% of full scale ± 0.5% of full scale 0 - 1T 300T ± 1 % of full scale 0 - 300T ... 1200T |
| Total accuracy at ambient temperature: | |
| TCS (Thermal Compensated Sensitivity) | Typical 0.03% full scale x (temp. - amb) |
| Output Current | 4-20mA, Current Loop |
| Supply Voltage | 12-28 VDC |
| Electrical connection | 2 wire |
| Response time | Less than 13ms |
| Power supply regulation | Yes |
| Voltage Spike Protection | Yes |
| Polarity protection | Yes |
| Insulation test | 50 V DC (RMS) > 1GΩ |
| Sealing | IP68 / Submersible upon request |
| Material | Stainless steel |
| Intrinsic Safe Code | Ex ia IIC T5 Ta: 80°C (acc. To ATEX 94/9/EC) Ex ia IIC T5 Ga Ta: 80°C (acc. To IECEx) |

Note: Due to continuous product improvements, published specifications may change without notice.

Electrical connections

Cable:

- ✓ Hydraulic hose protected cable for tough environments
- ✓ Cable BFOU(i)
- ✓ Cable ÖLFLEX
- ✓ Cable MOR Polyrad
- ✓ Cable Subsea

Connector

- ✓ Gisma (titanium)
- ✓ Souriau (brass)
- ✓ Souriau (nickel-chrome coated brass)
- ✓ Glenair (stainless steel)

Scan-Sense AS is a Norwegian company specializing in design and manufacturing of high quality sensor solutions for pressure, load and force. The company has more than 28 years of experience of making tailor-made solutions for the oil and gas industry.